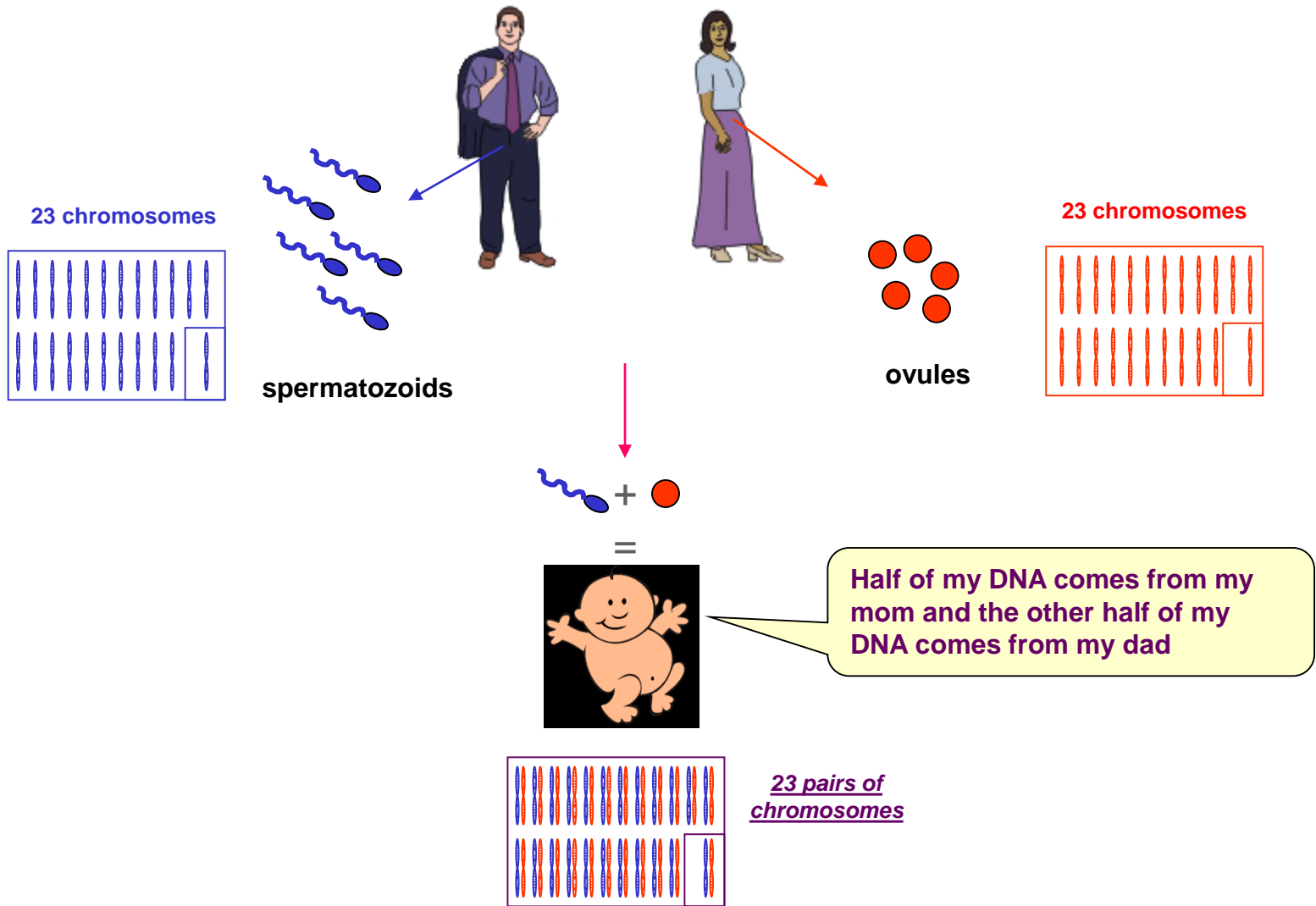
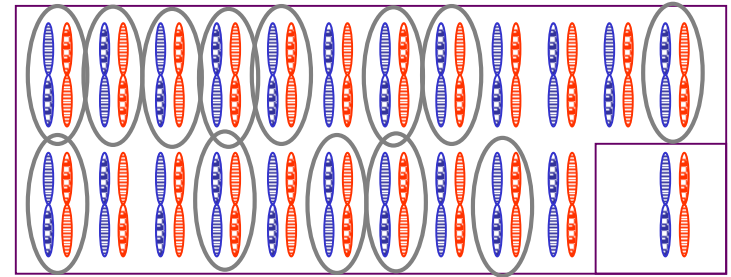
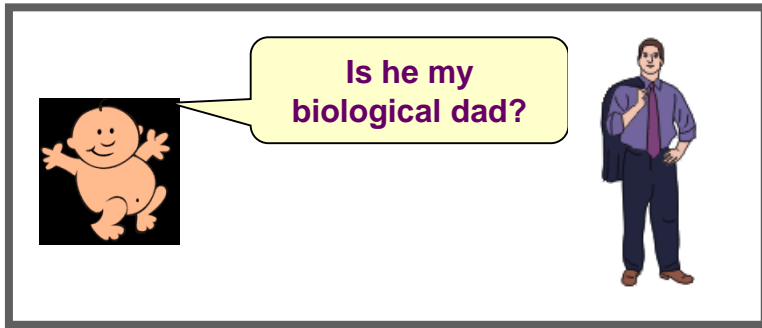


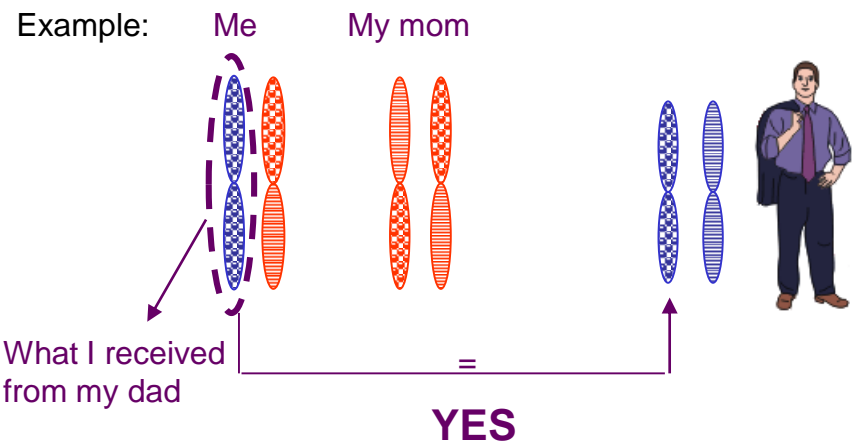
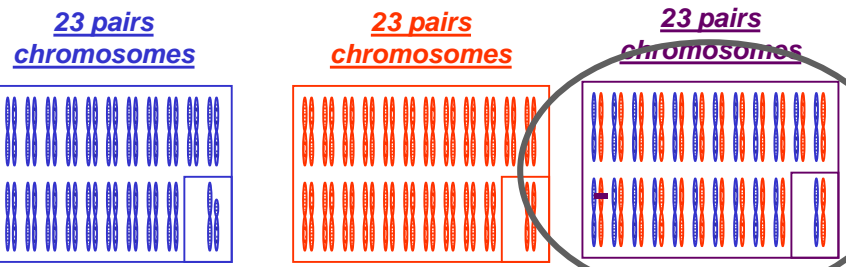
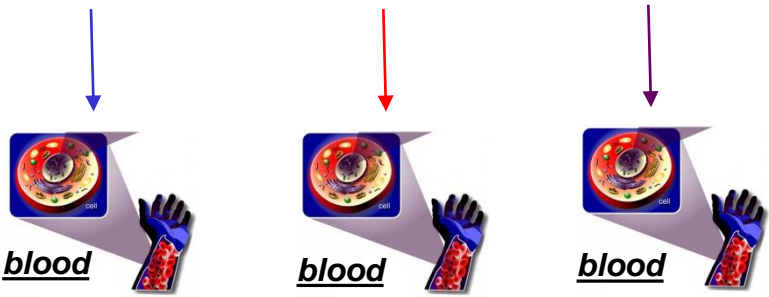
DNA-test → diagnosis of paternity



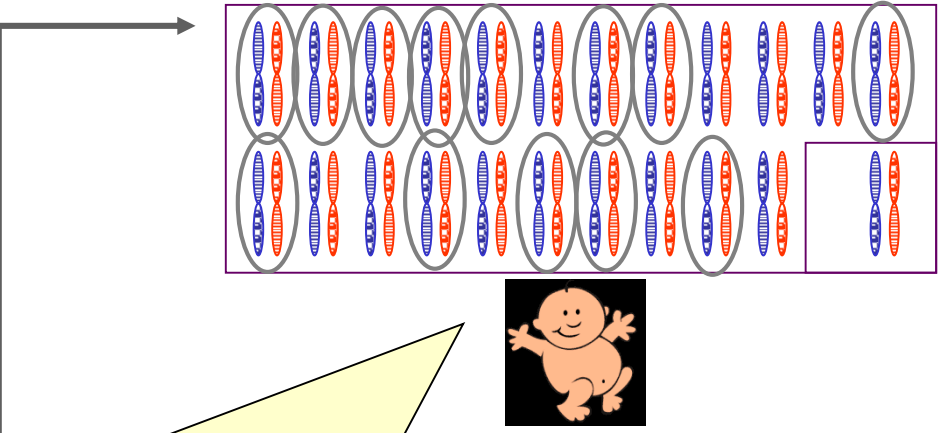
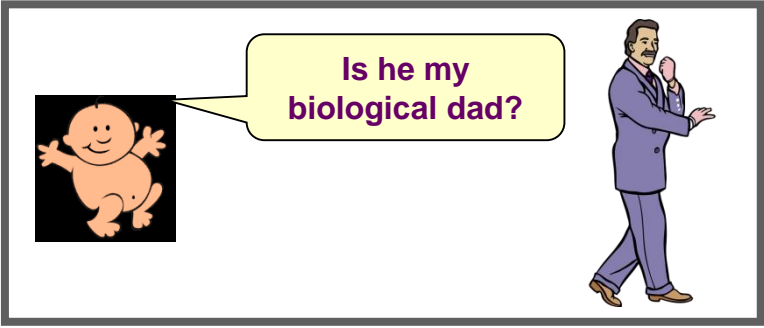
DNA-test → diagnosis of paternity



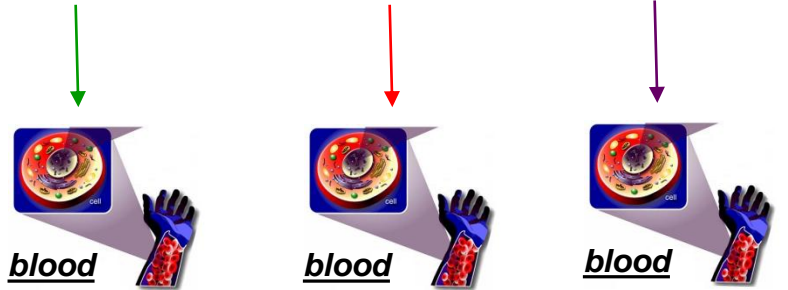
1. We look at the DNA part I received from my mom to identify the DNA I received from my dad.
2. we compare this DNA received from my dad to the DNA of the tested man.
3. If all the DNA received from my dad corresponds to the DNA of the man tested, then it is well my biological dad



DNA-test → diagnosis of paternity



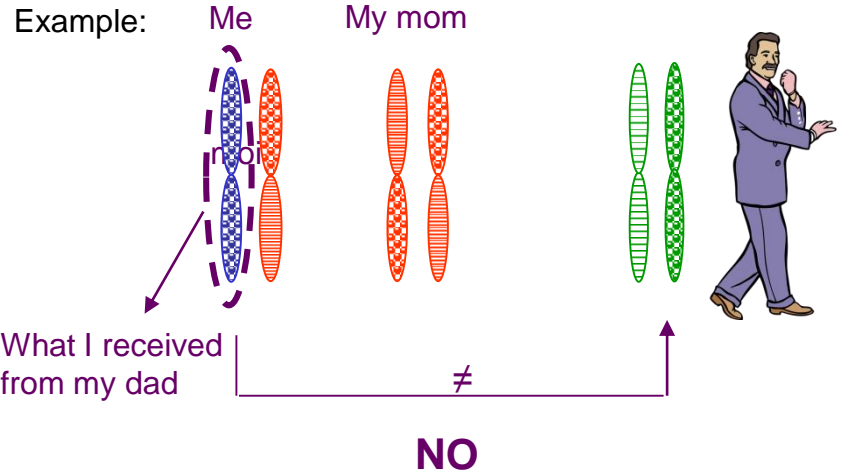
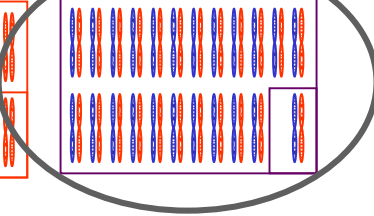
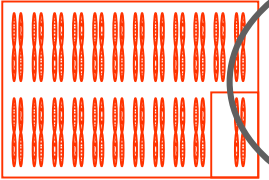
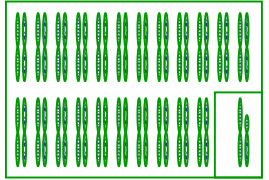
1. We look at the DNA part I received from my mom to identify the DNA I received from my dad.
2. we compare this DNA received from my dad to the DNA of the tested man.
3. If the DNA received from my dad does not correspond to the DNA of the man tested, then it is not my biological dad



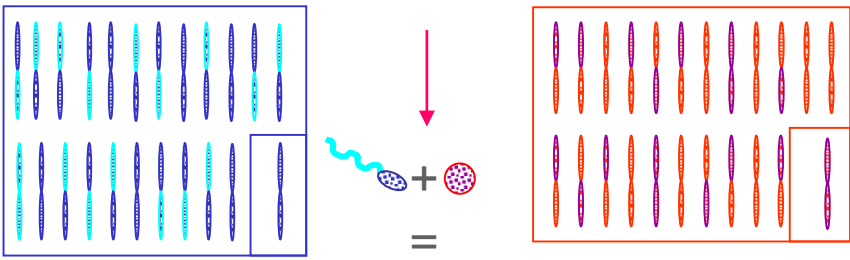
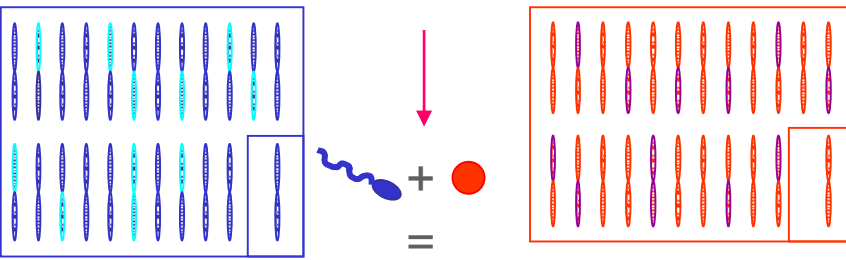
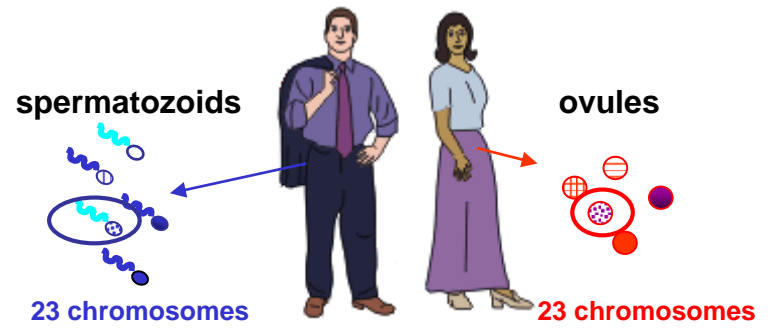
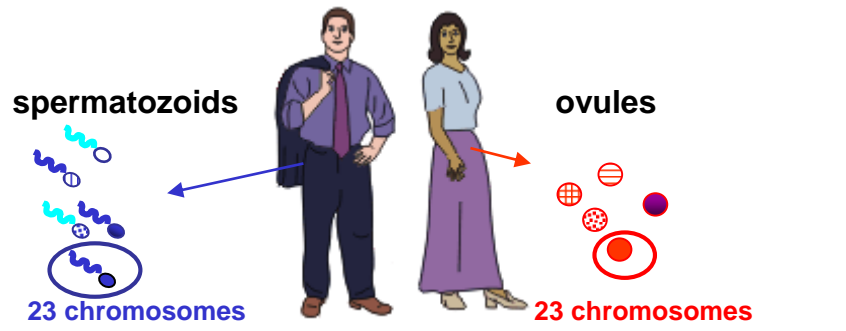
23 pairs chromosomes

23 pairs chromosomes

23 pairs chromosomes



DNA-test diagnosis of paternity – Other family relationship

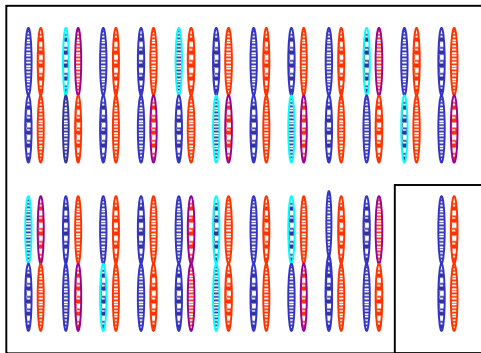


23 pairs
chromosomes

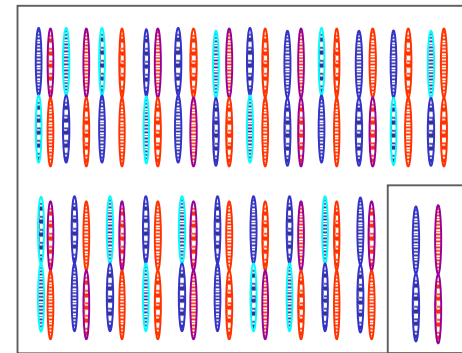


Half of my DNA comes from my mom and the other half of my DNA comes from my dad.

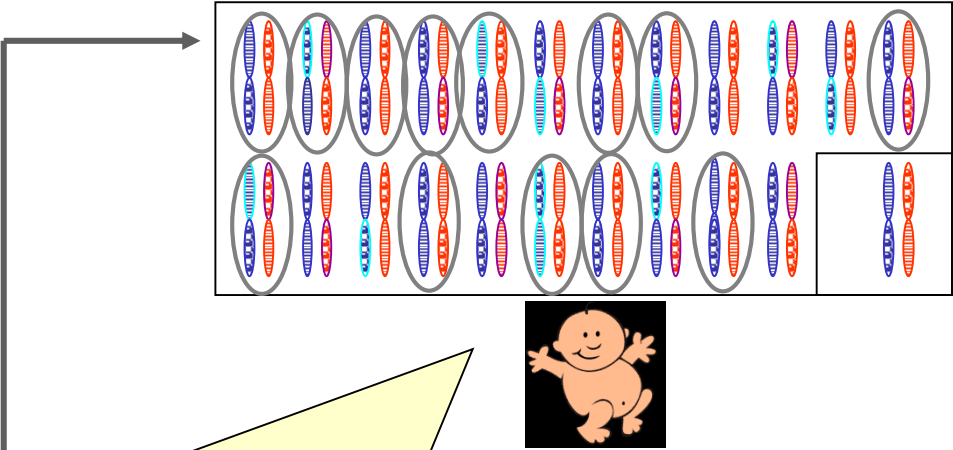
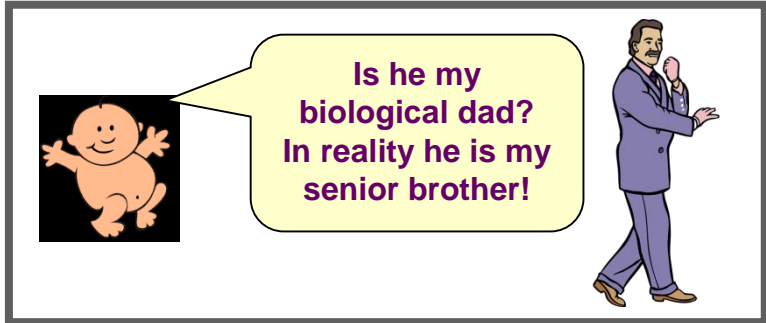
The DNA of my sister / brother looks like mine but is not identical because my dad and my mom did not give us all the same chromosomes



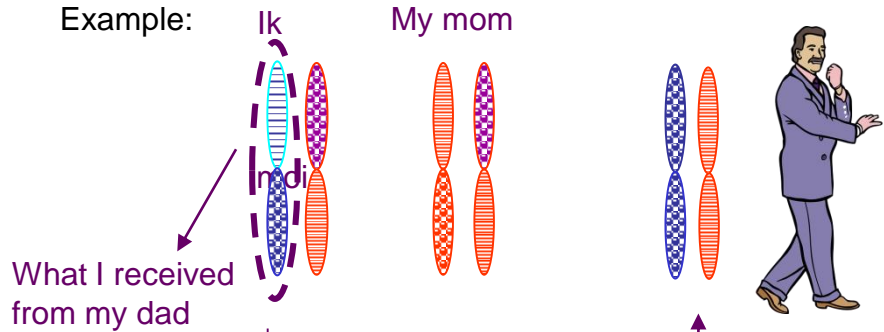
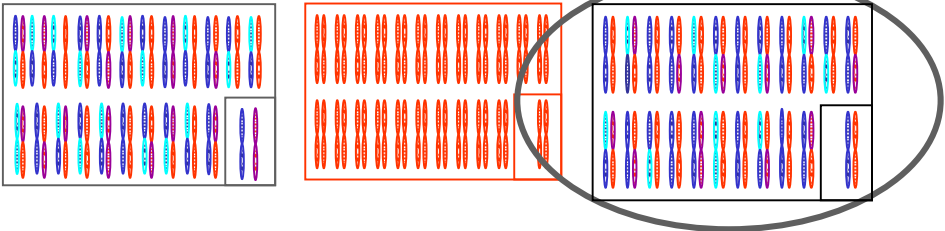
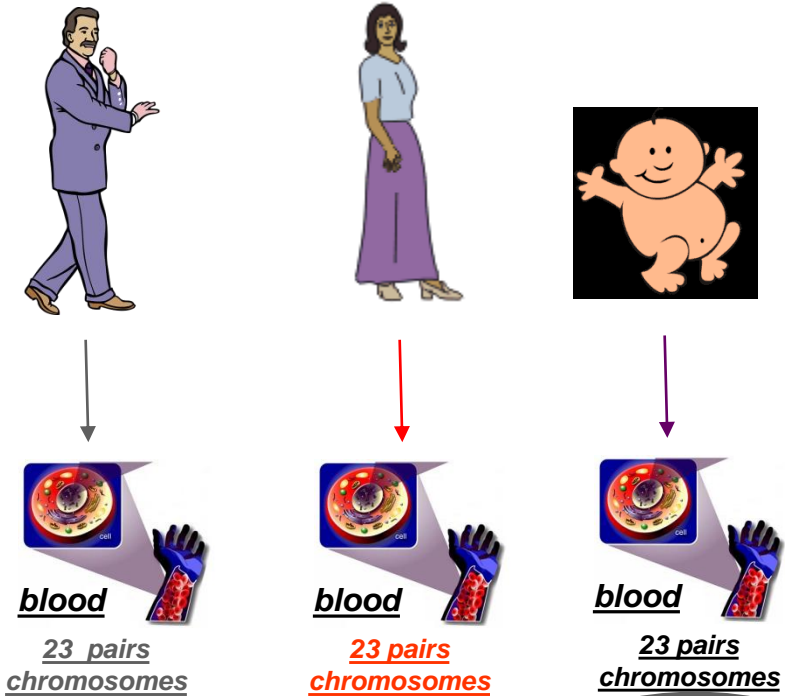
23 pairs
chromosomes



DNA-test → other family relationship



1. We look at the DNA part I received from my mom to identify the DNA I received from my dad.
2. we compare this DNA received from my dad to the DNA of the tested man.
3. If the DNA received from my dad does not correspond to the DNA of the man tested, then it is not my biological dad



NO, he is not my biological dad but well someone who is a close family member.